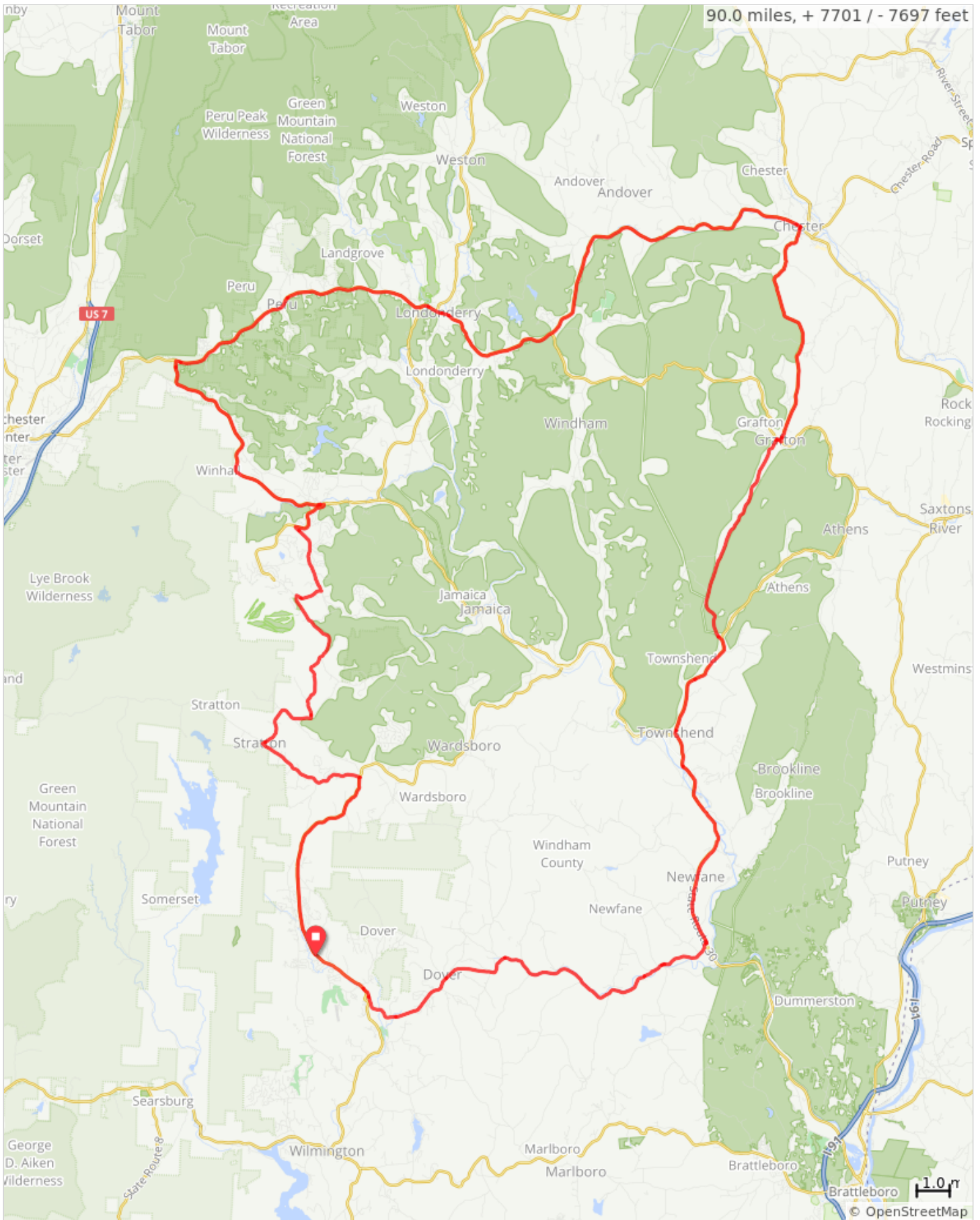


Aug 15 2020 _ 87 Mile Tour



Aug 15 2020 _ 87 Mile Tour

Dist	Type	Note	Next
0.0	📍	Start of route	1.9
1.9	←	Slight left onto Dorr Fitch Rd	1.3
3.2	↑	Continue onto Dover Hill Rd	4.2
7.4	↑	Continue onto E Dover Rd	5.6
13.0	↑	Continue onto Grimes Hill Rd	1.6
14.7	←	Left onto VT-30 N	6.9
21.5	→	Right onto VT-35 N	3.4
24.9	←	Slight left onto Townshend Rd	1.0
26.0	↑	Continue onto Grafton Rd	5.6
31.6	→	Right onto VT-121 E	0.1
31.7	←	Left onto VT-35 N	7.2
38.9	←	Left onto Main St	14.7
53.6	↑	Continue straight onto VT-11 W	8.4

53.6 miles. +3640/-4374 feet

Dist	Type	Note	Next
62.0	←	Left onto VT-30 S	7.1
69.1	←	Left onto River Rd	0.1
69.2	←	Left onto VT-30 S	0.2
69.4	→	Right after 7-Eleven (on the right)	1.4
70.8	←	Left onto Upper Taylor Hill Rd	1.7
72.5	↑	Continue onto Pikes Falls Rd	0.5
72.9	→	Right onto Brazers Way	0.8
73.7	←	Left onto Mountain Rd	0.9
74.6	↑	Continue straight to stay on Mountain Rd	3.5
78.1	→	Right onto W Jamaica Rd	2.2
80.3	←	Left onto Stratton Arlington Rd	9.7
90.0	📍	End of route	0.0

36.3 miles. +2868/-2921 feet